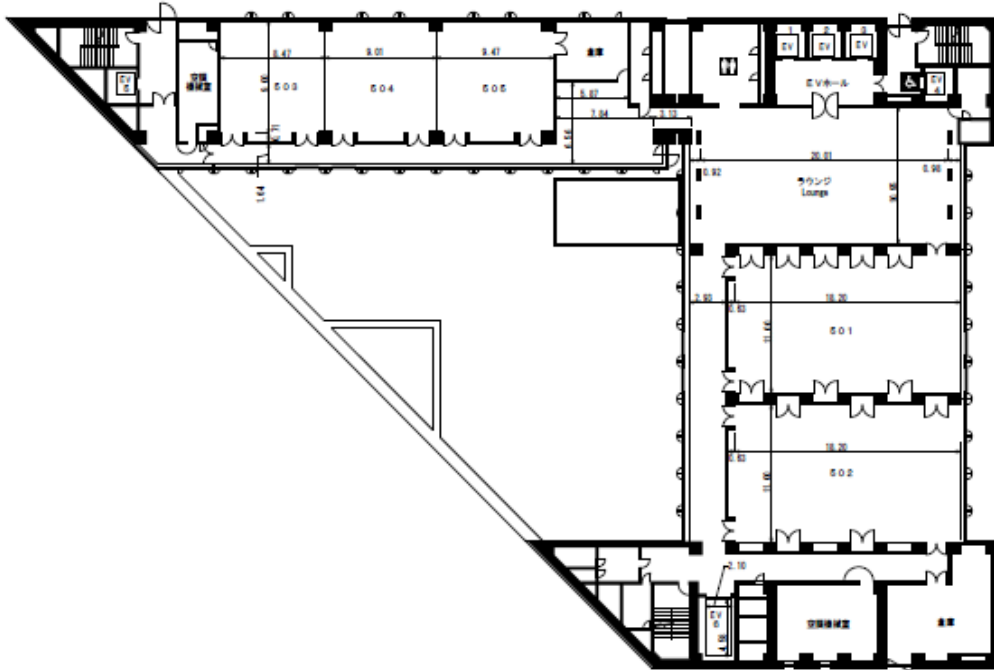


# General Information

## Symposium Venue's Floor Map



The Symposium venue is located at 5th floor of Kobe International Conference Center.  
The Registration desk and Speaker's assistance desk are located at 5th floor.

## Symposium Venue

The ISADS 2011 Symposium and Forum, the 4th workshop of AHSP (AHSP 2011) and the 10th workshop of ADSN (ADSN 2011) will be held in Kobe International Conference Center, Kobe.

ISADS 2011 AHSP 2011 ADSN 2011	6-9-1 Minatojima-nakamachi, Chuo-ku, Kobe 650-0046, Japan Tel: +81-78-302-5200 Fax: +81-78-302-6485 <a href="http://kobe-cc.jp/english/index.html">http://kobe-cc.jp/english/index.html</a>
--------------------------------------	--



## HOTELS at Kobe

PORTOPIA Hotel	10-1, 6 Chome, Minatojima Nakamachi, Chuo-ku, Kobe, 650-0046 Tel: +81-78-302-1111 Fax: +81-78-302-6877 <a href="http://www.portopia.co.jp/en/index.html">http://www.portopia.co.jp/en/index.html</a>
Hotel Pearl City Kobe	7-5-1 Chome, Minatojima-nakamachi, Chuo-ku, Kobe, 650-0046 Tel: +81-78-303-0100 Fax: +81-78-303-0211 <a href="http://www.pearlcity.co.jp/kobe/foreign/english.html">http://www.pearlcity.co.jp/kobe/foreign/english.html</a>

## Useful Telephone Numbers (prefix for Japan: +81)

Police	110
Kobe Police phone number	078-341-7441
Fire/Ambulance	119
Kobe Tourist Information phone number	078- 303-1010
Kobe City Information Center	078-322-0220
Flight Information (Kansai)	072-455-2500

## Access to Kobe

International Flight (Arriving Kansai International Airport (KIX))

Kansai International Airport (KIX) is the closest international gateway for Kobe and located around the Osaka Bay along a fast coastal highway. To transfer from KIX to Kobe:

- Transfer by Limousine Bus : 65 minutes and 1,800 Yen (KIX to downtown Kobe, Sannomiya) (Operations every 10-20 minutes between 06:20 - 23:15, Bus Stop No.6).

JR Shinkansen Train (Arriving at Shin-Kobe Station)

- Shinkansen Trains to Shin-Kobe from Tokyo take about 2 hrs 50 minutes and cost approx. 15,000 Yen. Trains run about every 20 minutes. The last train bound for Kobe is at 20:30 (arriving 23:19) the first at 06:00 am.

## Liability & Insurance

The organizers cannot be held responsible for accidents to symposium participants or accompanying persons, for damage or loss of their personal property or for cancellation expenses, regardless of cause. Participants are advised to carry out their own insurance arrangements during their stay in Japan.